

Wijn degustatie Commannderij Cuvee

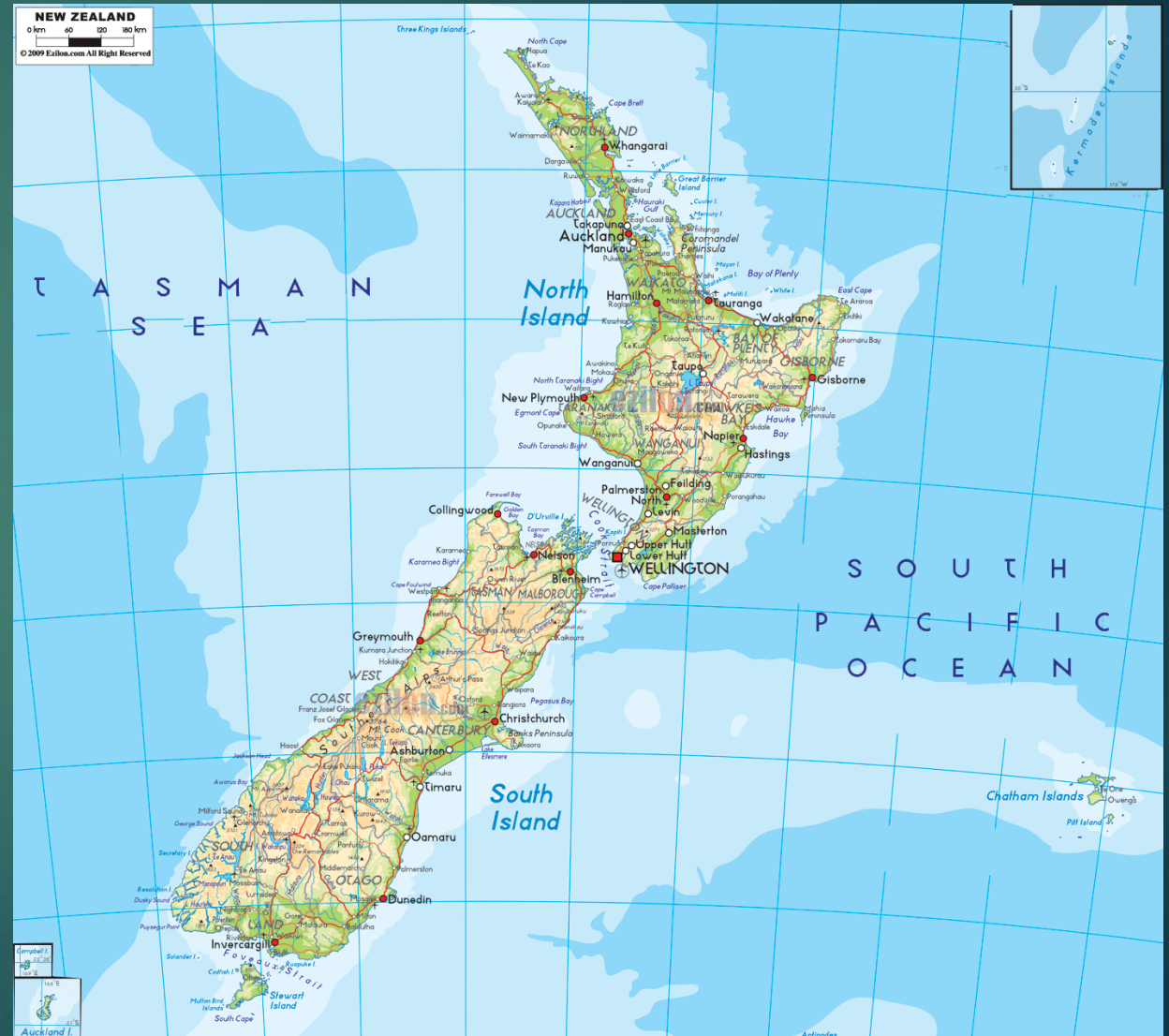
NIEUW-ZEELAND: ROOD

Nieuw-Zeeland ?



Nieuw-Zeeland Intro

- ▶ Afstand van noord naar zuid is meer dan 1600 KM
- ▶ Verschillende klimaat zones (subtropisch noorden – ‘koud’ maritiem klimaat)
- ▶ 2 eiland (noorder / zuider)
- ▶ Aoraki / Mount Cook (hoogste berg 3724 meter)



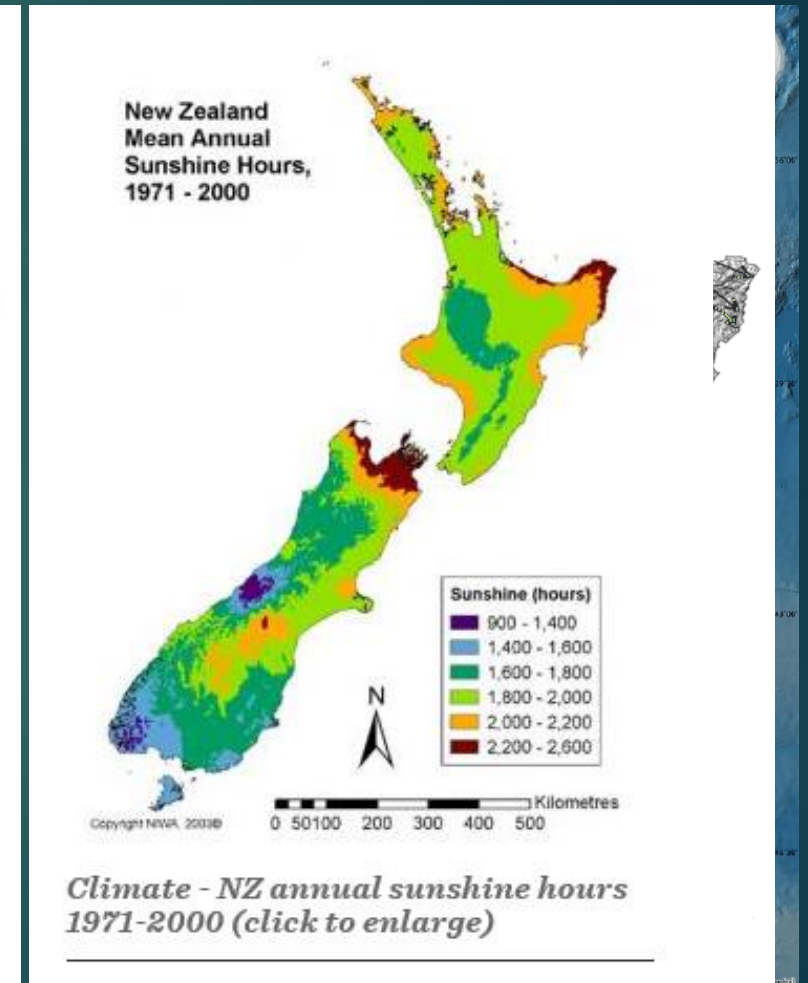
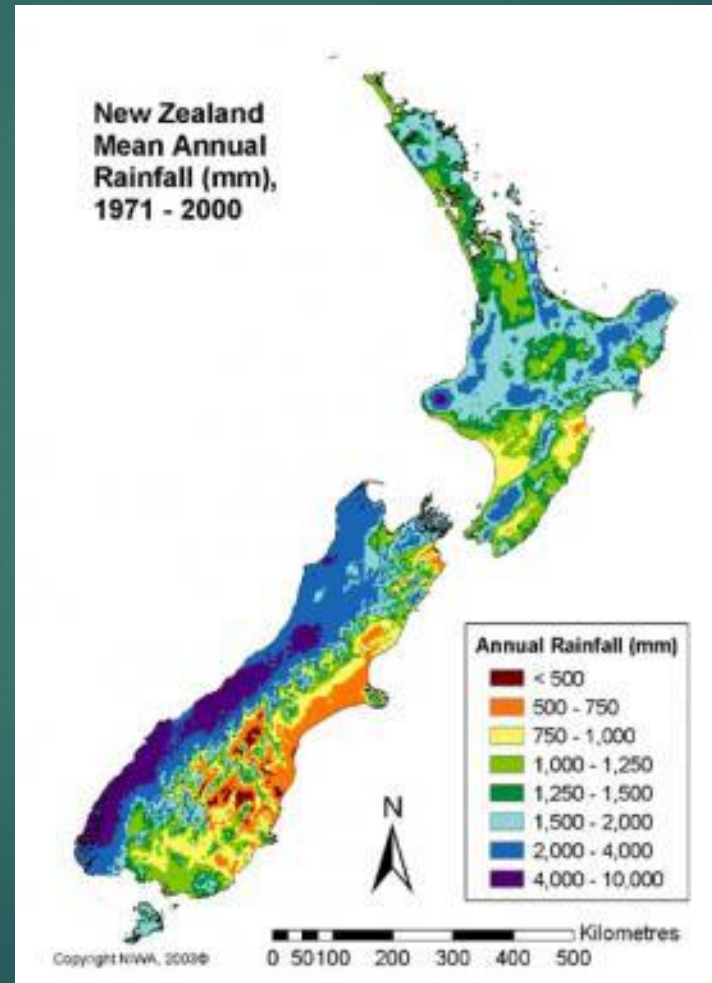
Main Divide Pinot Noir - 2012

- ▶ Ondergrond: mix van klei en stenen
- ▶ Pluk einde van april
- ▶ 18 maanden op eik



Nieuw-Zeeland klimaat

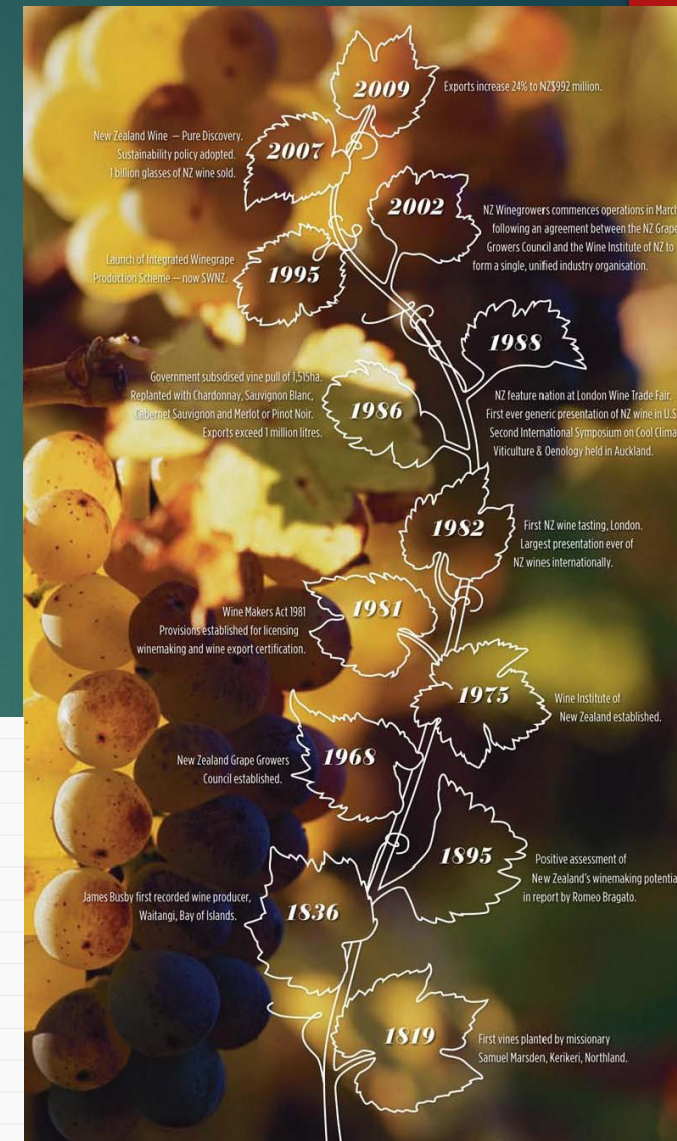
- ▶ Gebergte
- ▶ Wind
- ▶ Impact regen
- ▶ Zon



Nieuw-Zeeland in enkele cijfers

- ▶ Eerste wijn in 1819
- ▶ Tot 1980 vooral hybriden en Müller Thurgau
- ▶ In 1980 was er 5600 hectare wijngaarden
- ▶ In 2012 was dit al 34290 hectare
- ▶ Iets minder dan 700 wijnbouwers
- ▶ Wetgeving (2007): 85% druiven zelfde soort/ regio en jaar

REGION	LEW PAYERS
Northland	14
Auckland	111
Waikato/Bay of Plenty	11
Gisborne	18
Hawkes Bay	76
Waikarapa	68
Nelson	35
Martborough	137
Canterbury	33
Waipara	35
Otago	130
Other Areas	6
TOTALS	674

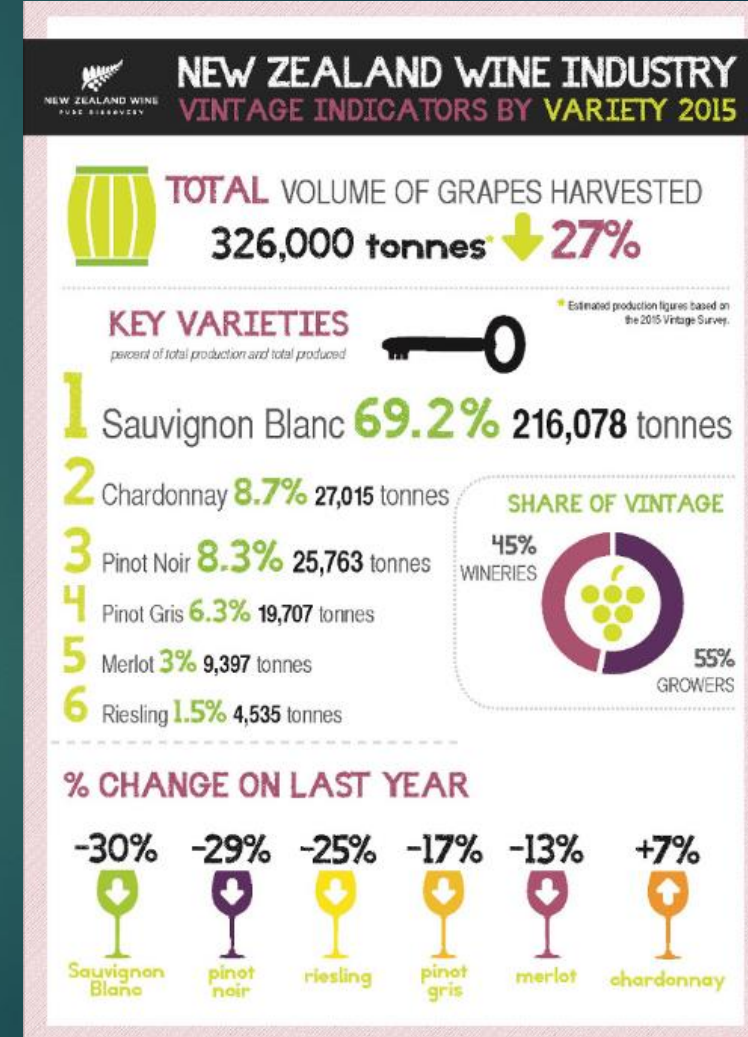
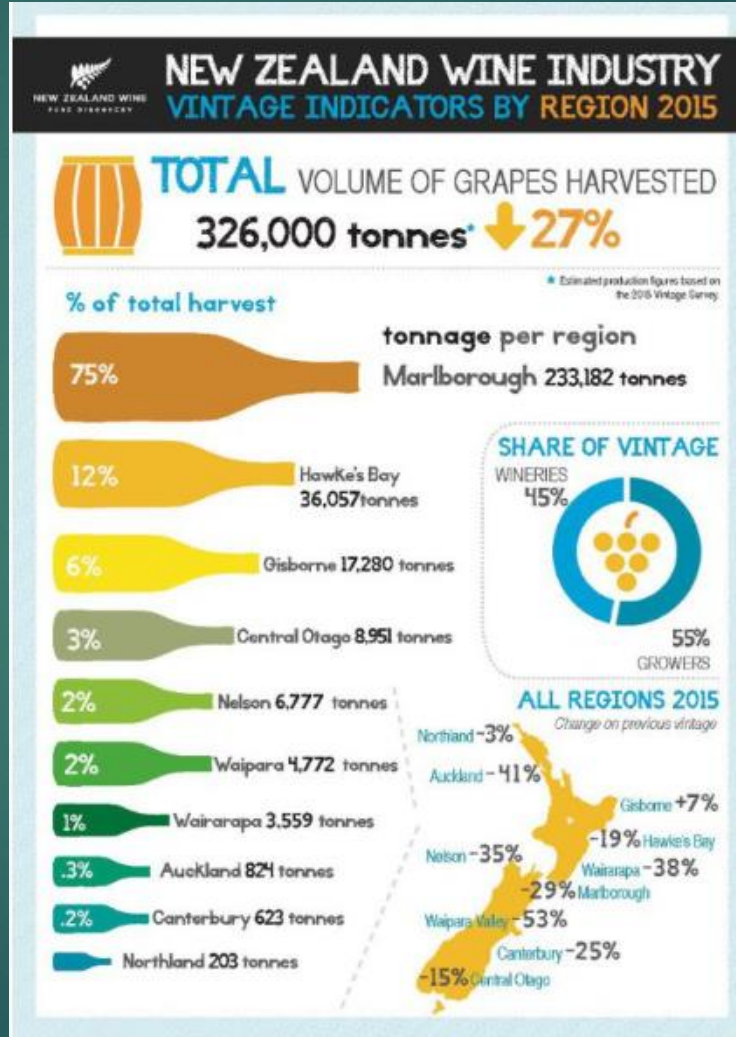
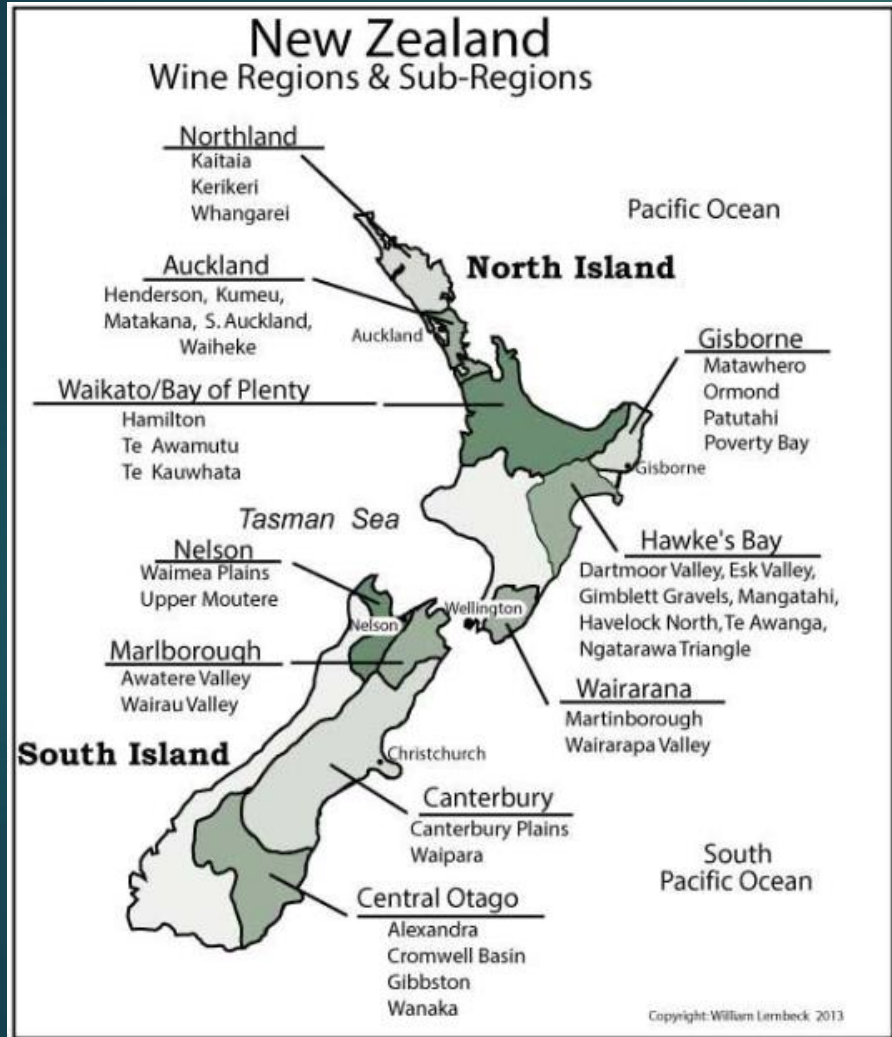


Escarpment - Pahi Pinot Noir

- ▶ 26 oude wijstokken
- ▶ 18 maand op eik
- ▶ 40% nieuwe eik
- ▶ Bewaarpotentieel van 7-10 jaar
- ▶ 5 km ten oosten van Martinborough



Nieuw-Zeeland: productie gebieden



Nieuw-Zeeland: rode wijn productie

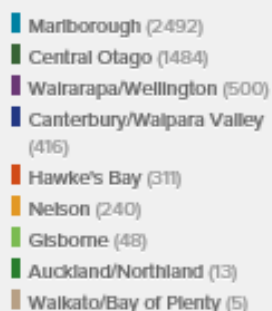


- ▶ Pinot Noir
- ▶ Merlot
- ▶ Cabernet Sauvignon
- ▶ Syrah
- ▶ Andere: oa Tempranillo

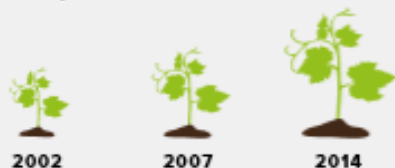
Nieuw-Zeeland: Pinot Noir

PLANTING DATA

Plantings per Region (2014) (Hectares)



Overall plantings in the last 12 years (Hectares)



2,029 4,441 5,569

36

TOTAL PRODUCTION
(000 TONNES, 2014)

8%

PROPORTION OF NZ
WINE PRODUCTION (2014)

6%

PROPORTION OF NZ
WINE EXPORTED (2014)

Typical regional styles

Climate is the major factor in the distinction of regional styles.

WAIRARAPA: Darker fruit aromas, often with a savoury component. Rich, full, sweet fruit on the entry with flavours in the dark plum and chocolate spectrum. The structure of the wines are based around long, fine tannins.

NELSON: Fragrant, complex, earthy and savoury textured wines with rich, spicy, cherry and plum flavours. These wines are concentrated, balanced and supple with fine lingering tannin.

CANTERBURY/WAIPARA VALLEY: Red and dark berry fruit with spicy notes. Firm structure and acidity. Savoury earthy characteristics.

Wine Regions of New Zealand

© Quentin Sadler 2011



Nieuw-Zeeland: Merlot - CS

Merlot plantings in the last 12 years (Hectares)



1,077 1,447 1,256

Cab-Sav plantings in the last 12 years (Hectares)



745 524 297

12

TOTAL PRODUCTION
(000 TONNES, 2014)

3%

PROPORTION OF NZ
WINE PRODUCTION (2014)

1%

PROPORTION OF NZ
WINE EXPORTED (2014)

Typical regional styles

Climate is the major factor in the distinction of regional styles.

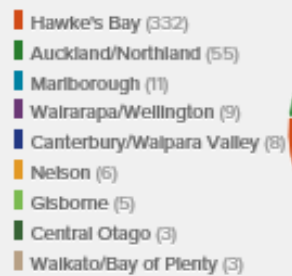
CLIMATE: predominantly grown in the warmer regions of Auckland/Northland and Hawke's Bay which get extended heat accumulation due to lower diurnal temperature variation.

SOILS: Whilst Auckland has primarily clay-rich soils, Hawke's Bay has a huge diversity of soils with river terraces comprising of volcanic loess, alluvial silts and deep river gravels.



Nieuw-Zeeland: Syrah

Plantings per Region (2014) (Hectares)



Overall plantings in the last 12 years (Hectares)



2002 2007 2014

117 **257** **423**

2

TOTAL PRODUCTION
(000 TONNES, 2014)

0.5%

PROPORTION OF NZ
WINE PRODUCTION (2014)

0.1%

PROPORTION OF NZ
WINE EXPORTED (2014)

Typical regional styles

Climate is the major factor in the distinction of regional styles.

CLIMATE: Predominantly grown in the warmer regions of Auckland/Northland and Hawke's Bay which benefit from extended heat accumulation due to lower diurnal temperature variation.

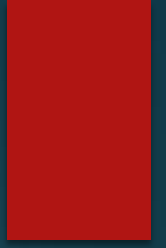
SOILS: Whilst Auckland has primarily clay-rich soils, Hawke's Bay has a huge diversity of soils with river terraces comprising of volcanic loess, alluvial silts and deep river gravels.

Wine Regions of New Zealand

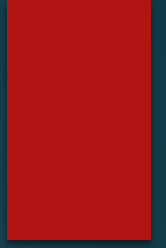
© Quentin Sadler 2011



Pegasus Bay – Pinot Noir 2008



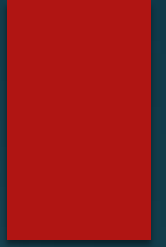
Amisfield - Pinot Noir



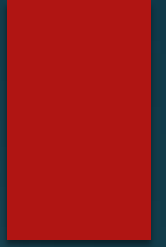
Te Awa - Syrah Hawkes Bay



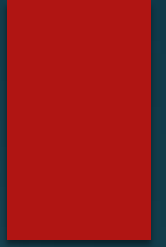
Te Mata Estate - Bullnose Syrah



Villa Maria - Cellar Selection



Stonyridge Larose - 2004



Te Mata Estate - Coleraine

